



Mannings Heath Golf Club



A Most Impressive Place for Training, Meetings, Conferences and Play

A venue to suit whatever your needs.....training, meetings, conferencing and to play from a quiet boardroom to a stunning beamed conference room, to simply a room away from the office for an informal team meeting, we are here to provide a unique service and event. And of course, every room comes equipped with everything you could ever need for a successful event.

The Venue...

Mannings Heath is a stunning 17th Century former manor house, set within 500 acres of West Sussex, but Gatwick is just around the corner and the M25 and M23 is on the doorstep providing a link to London and the South.

It has all the little touches that make hard work a little easier to bear in a relaxed yet productive environment. We believe our spaces are used wisely and are effective and innovative.

Training, Meetings and Conferences

We have the flexibility to suit your kind of meeting whether it be a product launch, presentations, assessments, interviews for a new team, dynamic training or simply getting away from the office without disruption.

With 9 comfortable, well equipped meeting rooms and breakout spaces, Mannings Heath will inspire and generate creativity and ideas – with all our rooms enjoying natural daylight to keep you refreshed and engaged.

Business services are provided with a twist; tuck shop, coffee bar, dedicated meeting lounge, free Wifi to check on mail or simply a quiet corner to chill out and gather your thoughts. We are always open for new ideas!



Food Glorious Food

Dining is one of life's huge pleasures so whether it's a quick bite to eat or coffee break between business sessions, a private gourmet dinner for important clients or a mouth watering meal together in our Goldings Restaurant, our outstanding Clubhouse offers a selection of the tastiest dining of any golf club in the UK – we were voted Catering Clubhouse of the Year 2008. From healthy working lunches to tasty finger food, the team can provide the right combination to refuel and revive.

Private Dining – personalised menus for formal entertaining, terraced barbecues, gala dinners, afternoon teas with the team or themed parties – in a nutshell whatever suits you.

People

No two events or meetings are the same – from the moment you arrive to the moment you leave, a dedicated events coordinator will be by your side to meet your precise objectives and tailor your day to suit your individual needs. You focus on your work and let us add the extra touches.

Staying Over

Whether you're with us for a company meeting or a private dinner, why not stay over at either our renovated cottage Fullers a short stumble away from the clubhouse or our stunning 5 star sister property South Lodge Hotel situated just 5 minutes away.

Work Hard. Play Hard....

We also recognise that it's a productive balance between work and play. We can help you to include special events, team building exercises or any number of activities into your schedule including Driving activities, country pursuits, shooting, climbing walls and team work challenges. Or take advantage of being located at a golf club after the demands of the working day and unwind with a round of golf, use of the driving range, putting lawns or host a golf clinic with one of our friendly PGA Professionals.

Travelling To and From

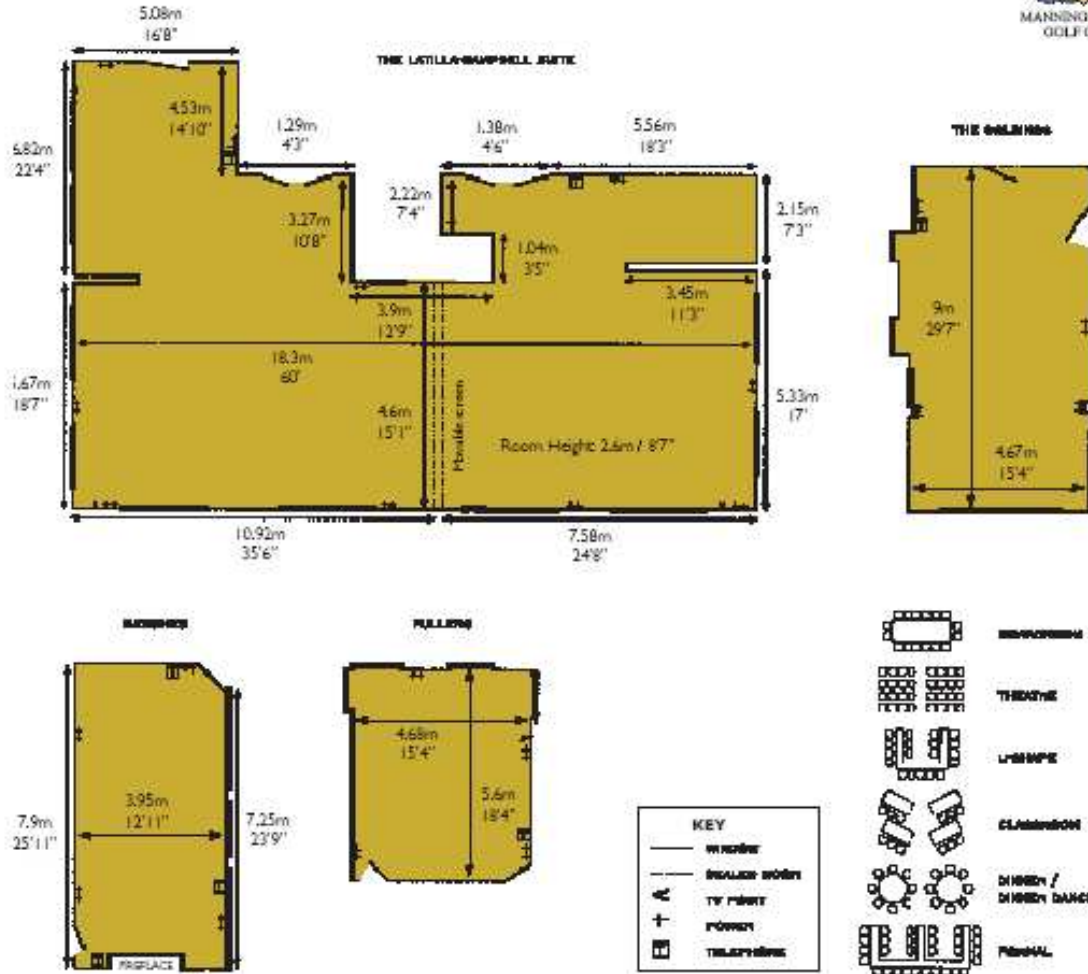
Be it chauffeur driven cars, airport pickups or helicopter landings, simply let us know the time and the place and we will organise the rest.

Bookings

To make a booking or discuss your event please call our events us on +44 (0) 1403 220 349 or email enquiries@manningsheath.com



MANNINGS HEATH GOLF CLUB



ROOM SPECIFICATIONS AND CAPACITIES

	AREA (METRIC)	HEIGHT (METRIC)	WIDTH (METRIC)	LENGTH (METRIC)	AREA (IMPERIAL)	HEIGHT (IMPERIAL)	WIDTH (IMPERIAL)	LENGTH (IMPERIAL)	RECEPTION	THEATRE	L-SEMPLE	CLASSROOM	DINING	DINING DANCE	CUBBY	RECEPTION	WALL LIGERS	CLIMBERS	BEHINDER DOORS	TELEPHONE POINTS	TV / BEHINDER DOORS	ROOM WIDTH	DOOR HEIGHT
LATILLA-CAMPBELL	84	2.6	4.6	18.3	908	8'5"	15'1"	60'	40	116	30	56	120	180	72	150	11	7	20	2	2	1.2m	195m
LATILLA	33	2.6	4.6	6.9	341	8'5"	15'1"	22.6	20	40	16	15	40	30	30	40	6	3	8	1	1	1.2m	195m
CAMPBELL	52	2.6	4.6	11.4	565	8'5"	15'1"	31.4	30	70	30	30	60	50	40	60	5	4	12	1	1	1.2m	195m
BEECHERS	30	2.5	4.2	7.2	328	8'2"	13	23.6	14	18	N/A	N/A	14	N/A	N/A	N/A	3	2	8	2	1	0.9m	195m
THE GOLDINGS	40	2.5	4.6	9	445	8'2"	15'1"	29.5	28	35	20	15	32	N/A	24	35	6	N/A	10	1	1	0.9m	195m
FULLERS	26	2.6	4.6	5.6	284	8'5"	15'1"	18.8	8	N/A	N/A	N/A	N/A	N/A	N/A	N/A	2	2	18	2	1	0.9m	195m



Conference Day Delegate Rates & Room Hire Prices

Delegate Package @£35.00 + vat (min 6 pax)

- Room hire of the main meeting room
- Unlimited Tea, Coffee's including tea and coffee on arrival, morning tea and coffee with biscuits and afternoon tea with muffins
- Unlimited use of our delegate tuck / sweet shop
- Delegate Stationery & facilitator toolbox
- Flipchart and Pens
- Business Hot Desk with WIFI
- Complementary Car Parking
- Sandwich buffet lunch with jugs of iced water
- Complimentary WIFI access
- Dedicated Events Coordinator
- A bucket of balls on the Driving Range to blast away the day!

Upgrade options

- 2 course restaurant lunch and full working buffet lunch at £5pp

Room hire Rates

Room	Full Day Meeting & Syndicate Hire	Private Dining – Lunch, Dinner, Breakfast Drinks Reception
	8.30-5.30pm	Lunch: 11.00am – 3.00pm Dinner: 7.00pm – 11.00pm
LatillaCampbell	£650.00	£400.00
Latilla	£250.00	£200.00
Campbell	£350.00	£300.00
Greenslade	£200.00	£100.00
Beechers	£250.00	£100.00
Fullers	£200.00	£100.00
Goldings	£300.00	£250.00
Dining Room	£150.00	£150.00
Quiet Room	£100.00	£100.00
Punchbowl	£100.00	£100.00

All prices are quoted exclusive of VAT and are subject to availability.